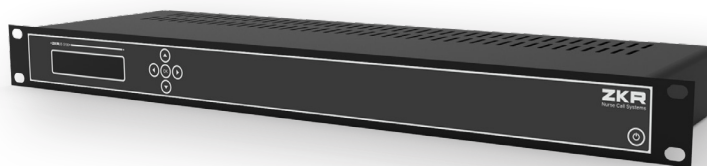


Application Server



The server controls the operation of the Comfort, Versatile Plus, Versatile, and Air Plus (optional) systems used in hospitals. The server provides log reporting through a web interface and enables integration with other systems used throughout the building. Our servers have a Linux-based robust and reliable infrastructure.



- Troubleshooting and error notification of all system devices
- Linux Operating System
- Voice Record Module (for Comfort and Versatile Plus systems)

Integrations*

- Integration with WiFi mobile phones
- Integration with DECT telephones
- Integration with pagers
- Integration with PBX and ability to start emergency codes (such as 1111, 2222, 3333)
- IP, PRI, BRI, Analog Connection
- Integration with Fire Alarm Systems (Modbus, Bacnet, Special TCP connection types)
- Integration with CCTV Systems (Serial Port, Special TCP connection types)
- Integration with RFID Systems (Web service, Special TCP connection types)
- Integration with Hospital Information System
- Integration with Lighting Automation

*Integrations each require a separate purchase of integration software license

Application Server M30

ZKRUNCIPSR10300

Software supporting up to 30 rooms

Application Server M50

ZKRUNCIPSR10400

Software supporting up to 50 rooms

Application Server M150

ZKRUNCIPSRM0150

Software supporting up to 150 rooms

Application Server M250

ZKRUNCIPSRM0250

Software supporting up to 250 rooms

All four of these servers share the same technical specifications below, and differ only in software license.

Technical Specification

Form Factor	1U rack server
Dimensions and Weight	H: 42.8 mm (1.67 in), W: 434.0 mm (17.09 in), D: 144 mm (5.6 in) Max weight: 5 kg
CPU	ARM base 1,8 Ghz Mali - Quad-Core Cortex-A17
Operating System	Linux 64 bit Linux OS Debian base Kernel 4 UEFI Secure Boot
Memory	Memory type: Dual Channel LPDDR3 RAM 2GB
Storage	• 16GB eMMC & 64GB SSD
Audio	RTL ALC4040 CODEC supporting up to 24-bit/192kHz audio Hardware ready for audio jack plug detection
Network Controller	Realtek RTL8211E-VB-CG Gigabit Ethernet
Wireless	802.11 b/g/n, Bluetooth V4.0 + EDR
Power	30W cabled PSU
Management	• ZKRUS SSH • Web Based Management Tools • Mini USB Consol
Input Connection	4 x USB 2.0 Gigabit LAN HDMI 3.5 mm Sound Jack Mini USB (for management)
Graphic Processor	ARM Mali T760 MP4 - supports OpenGL ES1.1 / 2.0 /3.0, openVG1.1, OpenCL and DirectX11